

# TOWARDS HARMONISATION OF POLAR INFRASTRUCTURE ACCESS

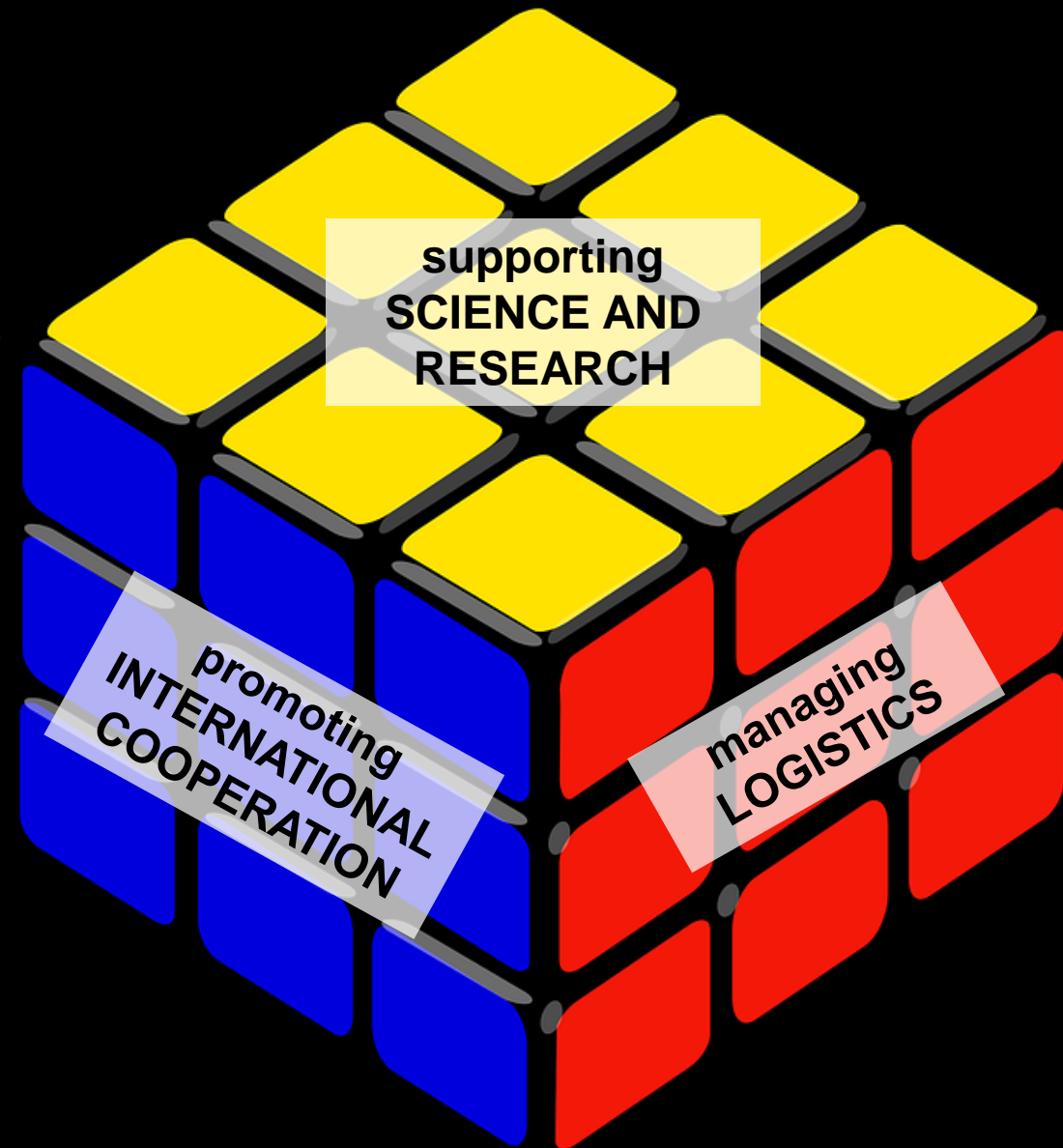
## POLAR PROGRAM WITHOUT OWN INFRASTRUCTURE

**Maria Teresa Cabrita**

Programa Polar Português (PROPOLAR)



# A **MULTI** DIMENSIONAL PROGRAM



supporting  
**SCIENCE AND  
RESEARCH**

promoting  
**INTERNATIONAL  
COOPERATION**

managing  
**LOGISTICS**

# A **BIPOLAR** PROGRAM



**PROJECT FUNDING**



**LOGISTICS**



**EARLY CAREER SCIENTIST SUPPORT**



**WORKSHOPS FOR PREPARATION OF POLAR MISSIONS**



**EDUCATION AND OUTREACH**



**BASIC LIFE SUPPORT TRAINING, SECURITY AND SURVIVAL IN LAND AND AT SEA, FIRE PREVENTION AND CONTROL**



**ANNUAL PORTUGUESE POLAR SCIENCE CONFERENCES**



**INTERNATIONAL REPRESENTATION**



## COOPERATION WITH NATIONAL ORGANIZATIONS

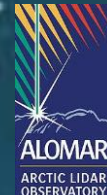


# planning and management of ARCTIC CAMPAIGNS

Max. 6 projects

12 researchers

commercial flights



# planning and management of ANTARCTIC CAMPAIGNS



6-10 projects

20-24 researchers

10-15 field work areas

Accommodation in 8-10 research stations and camping areas

Transport of equipment and materials

Management of DAP-PROPOLAR flight

## COOPERATION WITH PARTNER ANTARCTIC PROGRAMS





# managing PROPOLAR-DAP FLIGHT

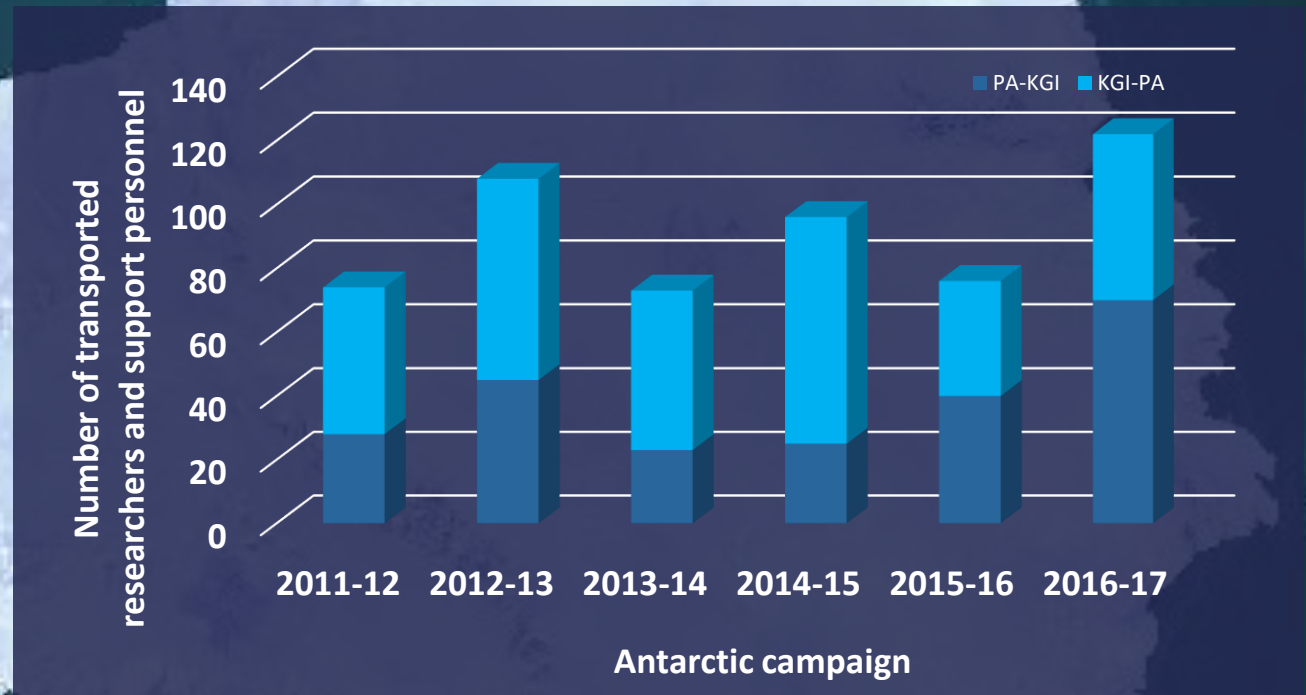
## PROPOLAR-DAP flight: Chile-Antarctica

**DAP**  
ANTARTICA



Portuguese contribution  
to Antarctic logistics

# managing PROPOLAR-DAP FLIGHT



60 % of PROPOLAR budget

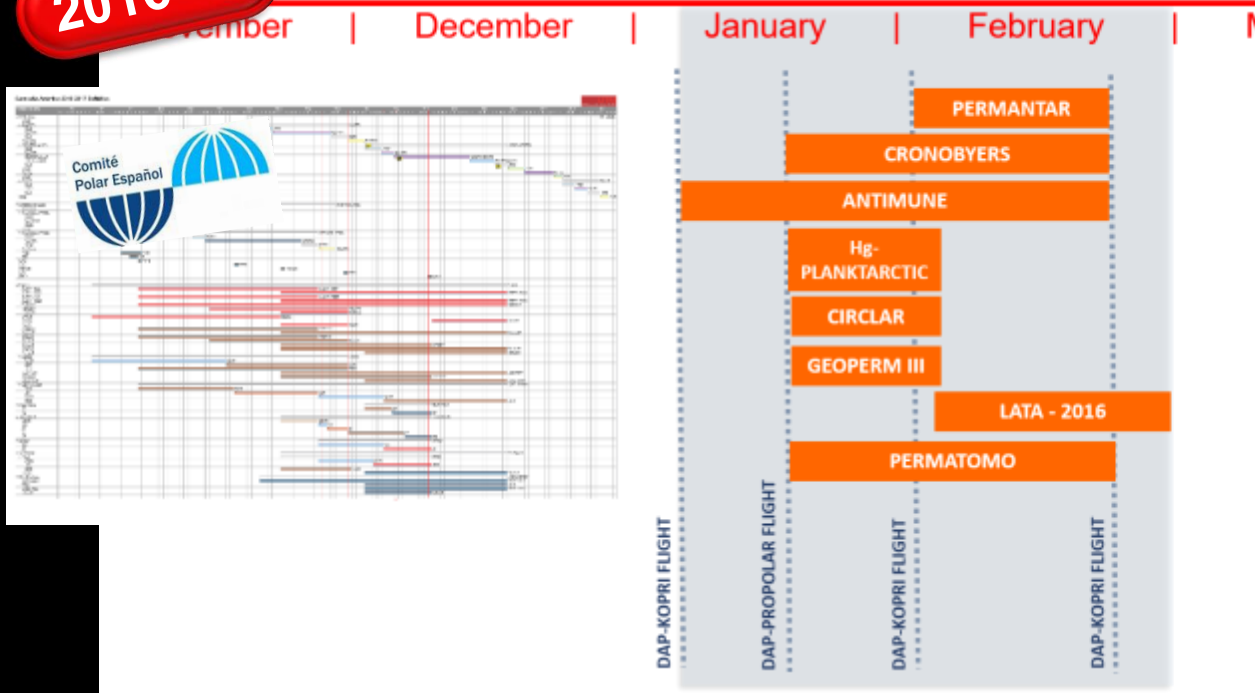
# WORKING AREAS

## South Shetland Islands Archipelago

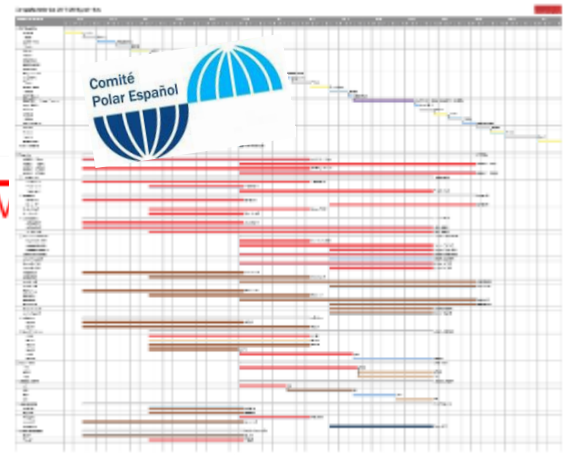
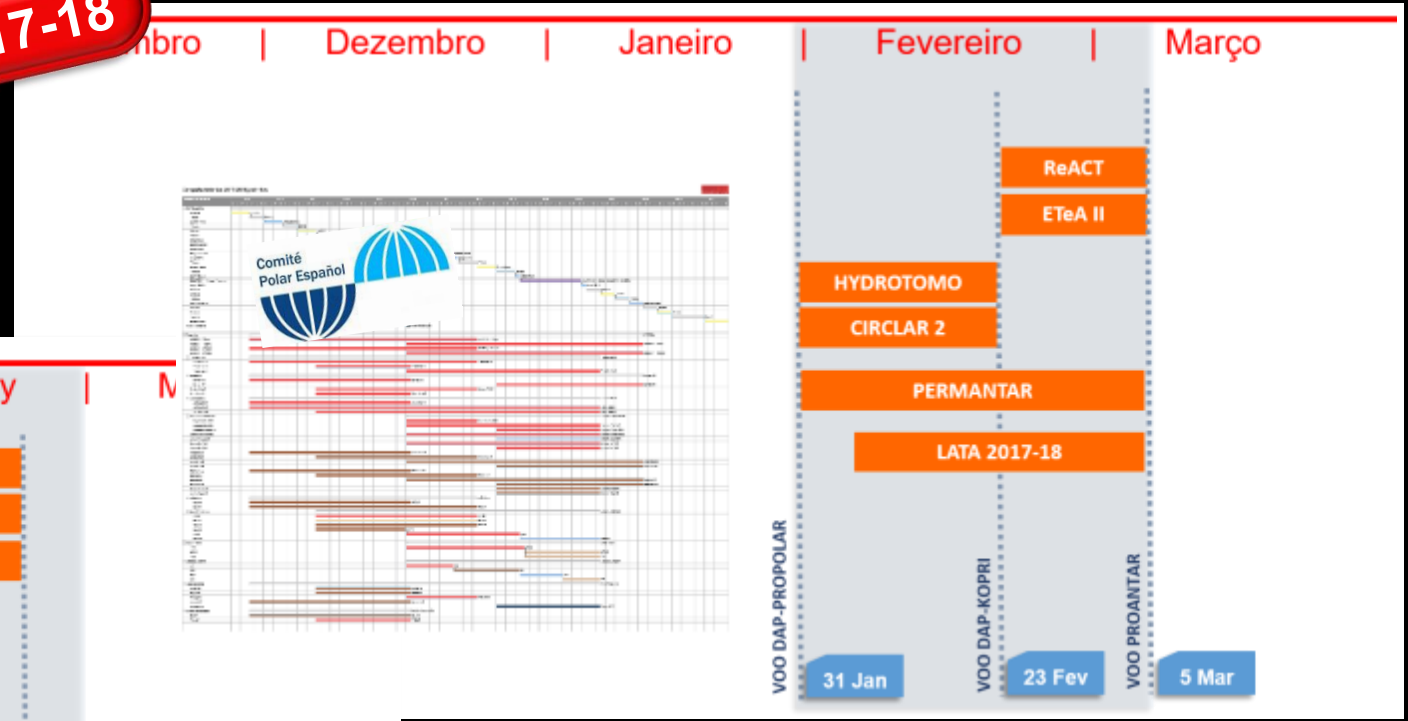


# Planning and management of ANTARCTIC CAMPAIGNS

2016-17



2017-18



## Equipment transport to Antarctica



# Access to Antarctica



## Transits between working areas



# Local access to working areas





# Research stations - South Shetland Islands Archipelago



# Research station - King George Island

20 km



Great Wall



Escudero



Machu Picchu



King Sejong



# Bottlenecks and recurring issues for Antarctic campaigns



Adjusting Portuguese mission timetables to partner program schedules

Providing inbound and outbound access to work areas

Defining best dates for DAP-PROPOLAR flights

# Differences in access for the Arctic and Antarctic stations



**EASY ACCESS** to work areas -  
commercial flights

**Less projects**

**Less researchers**

**More projects integrated in  
international Arctic research framework**



**MORE CONSTRAINED ACCESS** - work areas

**More projects**

**More researchers**

**More individual projects not integrated in  
international Antarctic research**

# Best practice

## What works well

Networking with partner programs

Solving unexpected logistic challenges

Equipment transport to Antarctica

## What works less well

Adjusting mission timetables

Finding flight dates to fit all requirements

# Recommendations and ideas to other polar programs

## Hosting

**Define best flight date schedule**

## Being hosted

**Share campaign planning and schedules between partner programs**

**Provide logistics manager and station head contacts, to improve communications during Antarctic summer seasons**

Any questions?



**THANK YOU FOR YOUR ATTENTION**



